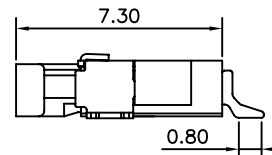
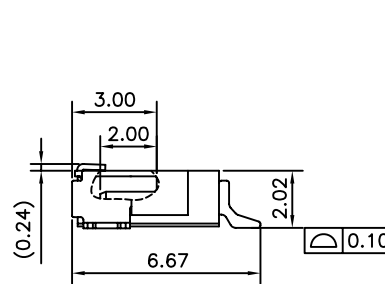


RECOMMENDED PCB LAYOUT  
GENERAL TOLERANCE  $\pm 0.05$

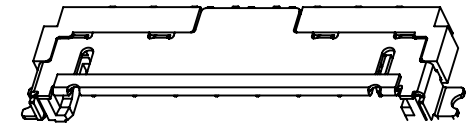


MATING DRAWING

NOTES:

1. MATERIAL:
  - 1.1 HOUSING: THERMOPLASTIC, HIGH TEMP, UL94V-0; COLOR: BLACK;LCP
  - 1.2 CONTACT: COPPER ALLOY(BRASS)
  - 1.3 SHELL: COPPER ALLOY(NICKEL SLIVER)
2. FINISH:
  - CONTACT: 50~100u" NICKEL UNDERPLATING OVERALL. 1:1U"MIN GOLD ON PLATED AREA
3. REFLOW SOLDER CAPABLE TO 260°C PER ACES SPEC.
4. SPEC. PLS. REFER TO SPEC-50458-XXXX-XXX
5. PACKAGE PLS. REFER TO 50458-XXXX-XX-TRP
6. PART NUMBER

51370-XXX X X-XXX  
 NO OF CKT 001  
 PACKING 0: TAPE & REEL PLATING 1: GOLD FLASH



CKT	DIM A	DIM B	DIM C	DIM D	DIM E
9	16	16.00	23.2	18.2	21.7

一般公差 <b>TOLERANCES</b> X $\pm 0.5$ JX $\pm 0.15$ X $\pm 0.25$ JXX $\pm 0.1$ ANGLES $\pm 2^\circ$		<b>宏致電子股份有限公司</b> <b>Aces Electronics Co.,Ltd.</b>	
檢驗尺寸標示 SYMBOLS $\oplus$ $\ominus$ INDICATE CLASSIFICATION DIMENSION $\ominus$ MARK IS CRITICAL DIM. $\oplus$ MARK IS MAJOR DIM.	品名 (TITLE) 2.0MM WTB WAFER CONN. SMT R/A TYPE	製圖 (DR) '17/11/08 ZHANGHAO 審核 (CHKD) BRAVE	圖號 (DWG NO.) 51370-XXXXX-XXX 核准 (APFD) BRAVE
表面處理 (FINISH)	比例 (SCALE) 1:1	單位 (UNITS) mm	張數 (SHEET) 1 OF 1 圖號 (SIZE) A4 版本 (REV) 0